

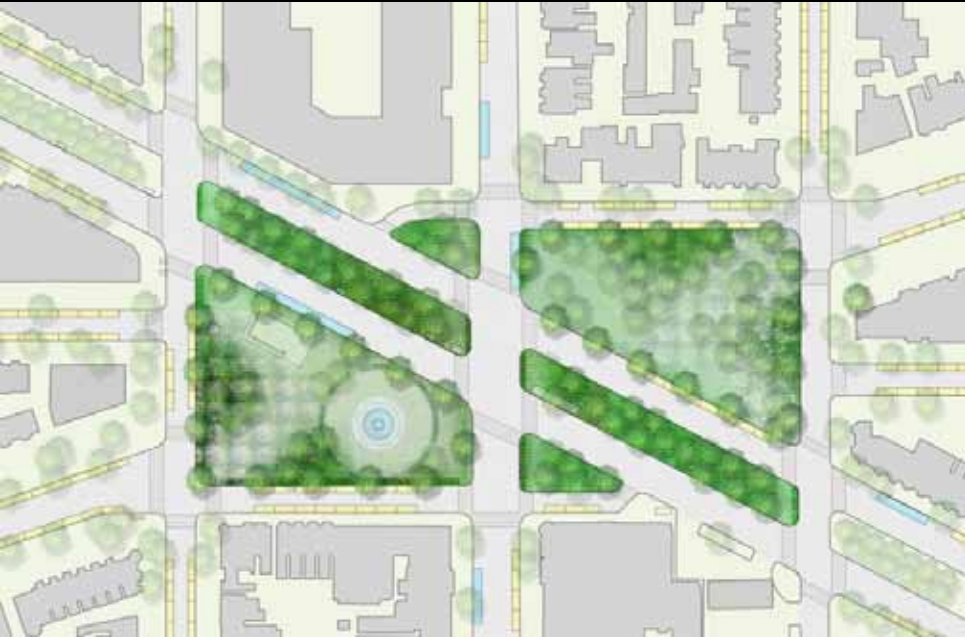


Eastern Market Metro Park /Plaza

Urban Design Goals

- Create a sustainable, unified and cohesive Park
- Create a child-friendly neighborhood park that brings neighbors together
- Provide layered buffer to separate park visitors from traffic
- Increase green space and canopy trees
- Facilitate connections between Barracks Row and Eastern Market
- Create a well-designed inter-modal transportation hub
- Create flexible space that allows for temporary markets and events
- Improve pedestrian safety
- Respect Pennsylvania Avenue view shed to US Capitol
- Use classical organization system consistent with L'Enfant Plan monumentality

3 Study Alternatives



EXISTING (Improved)



TRIPTYCH



CENTRAL PARK



Site Analysis Review

On an average week-day:

Metro :

12,000 passengers enter and exit

Metro buses :

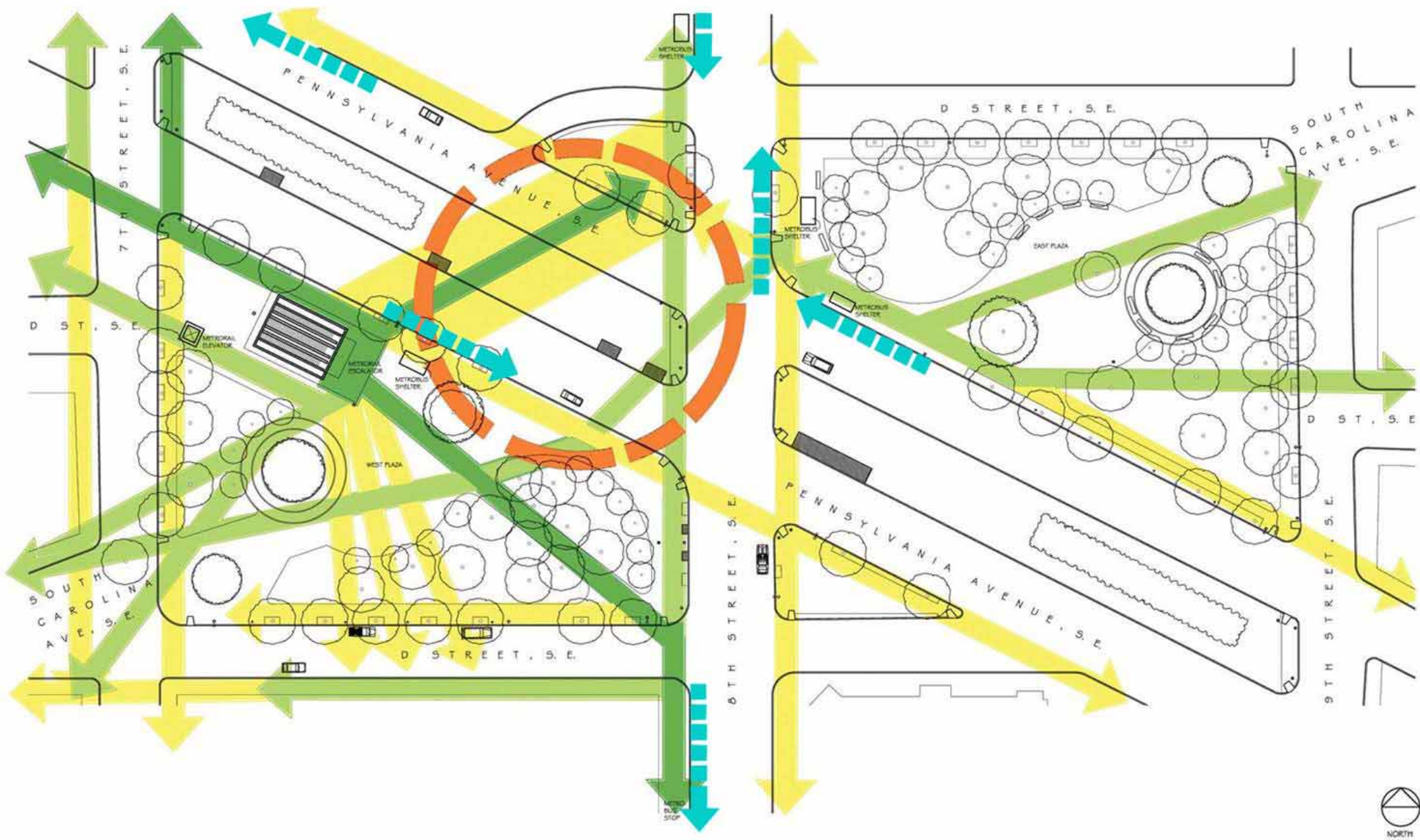
5,000 passengers board and exit

Cars :

48,000 vehicles travel on Pennsylvania Ave.

11,000 vehicles travel on Eighth Street

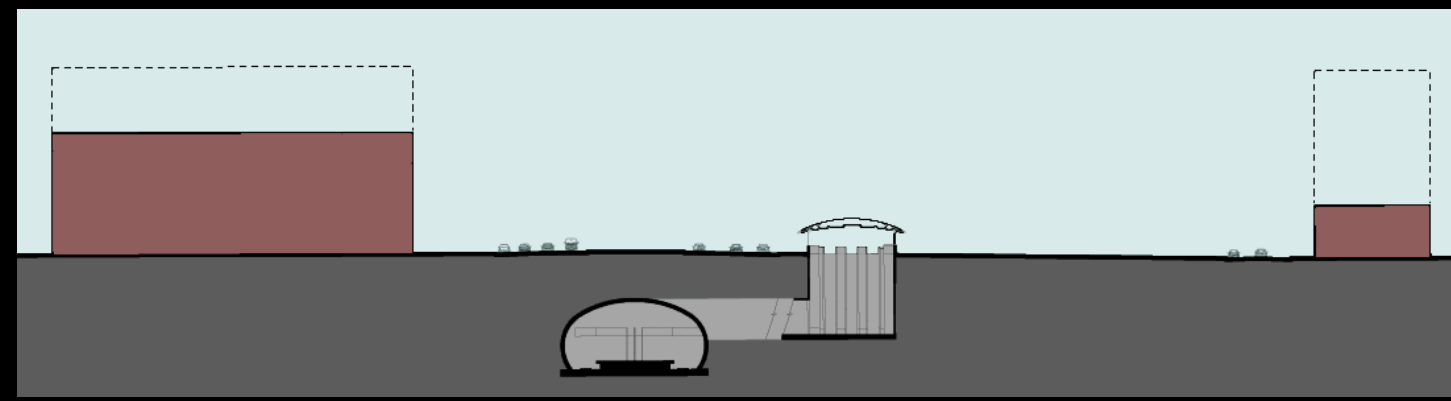




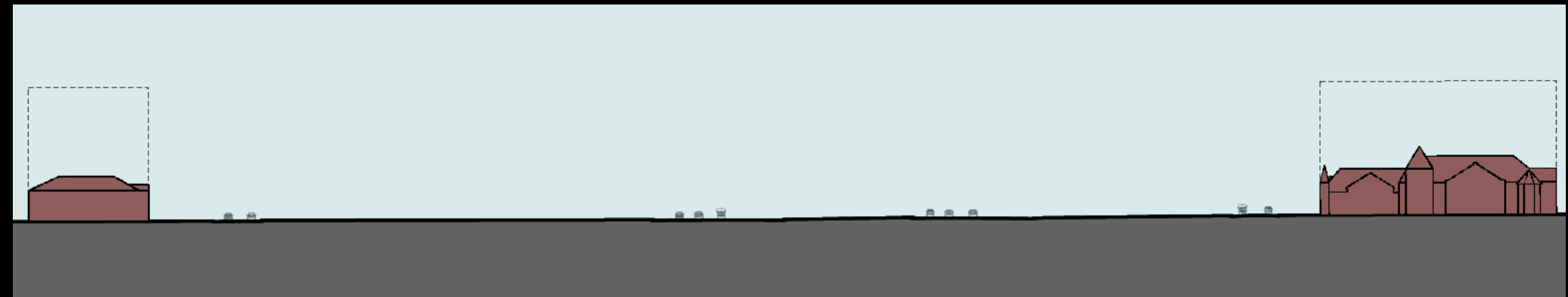
Pedestrian Circulation Patterns

- | | | | |
|--|------------------------------|---|---------------------------------|
|  | Primary Pedestrian Traffic |  | Metrobus Route |
|  | Secondary Pedestrian Traffic |  | Vehicular / Pedestrian Conflict |
|  | Tertiary Pedestrian Traffic | | |





North-South Section



East-West Section

Spatial Definition

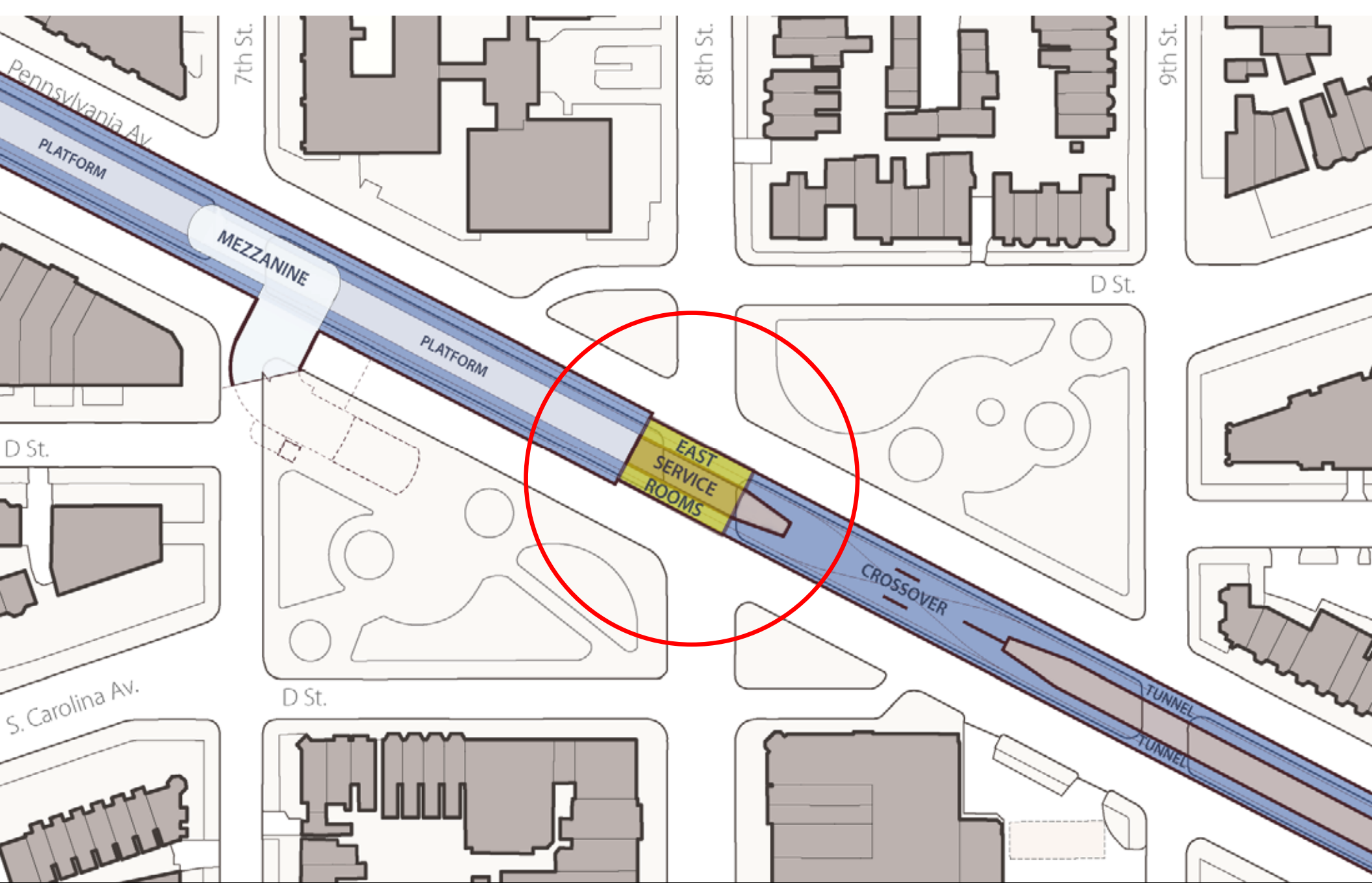




WMATA Facilities: Above Grade

Compiled from: AMT Survey and WMATA Rail Alignment Drawings

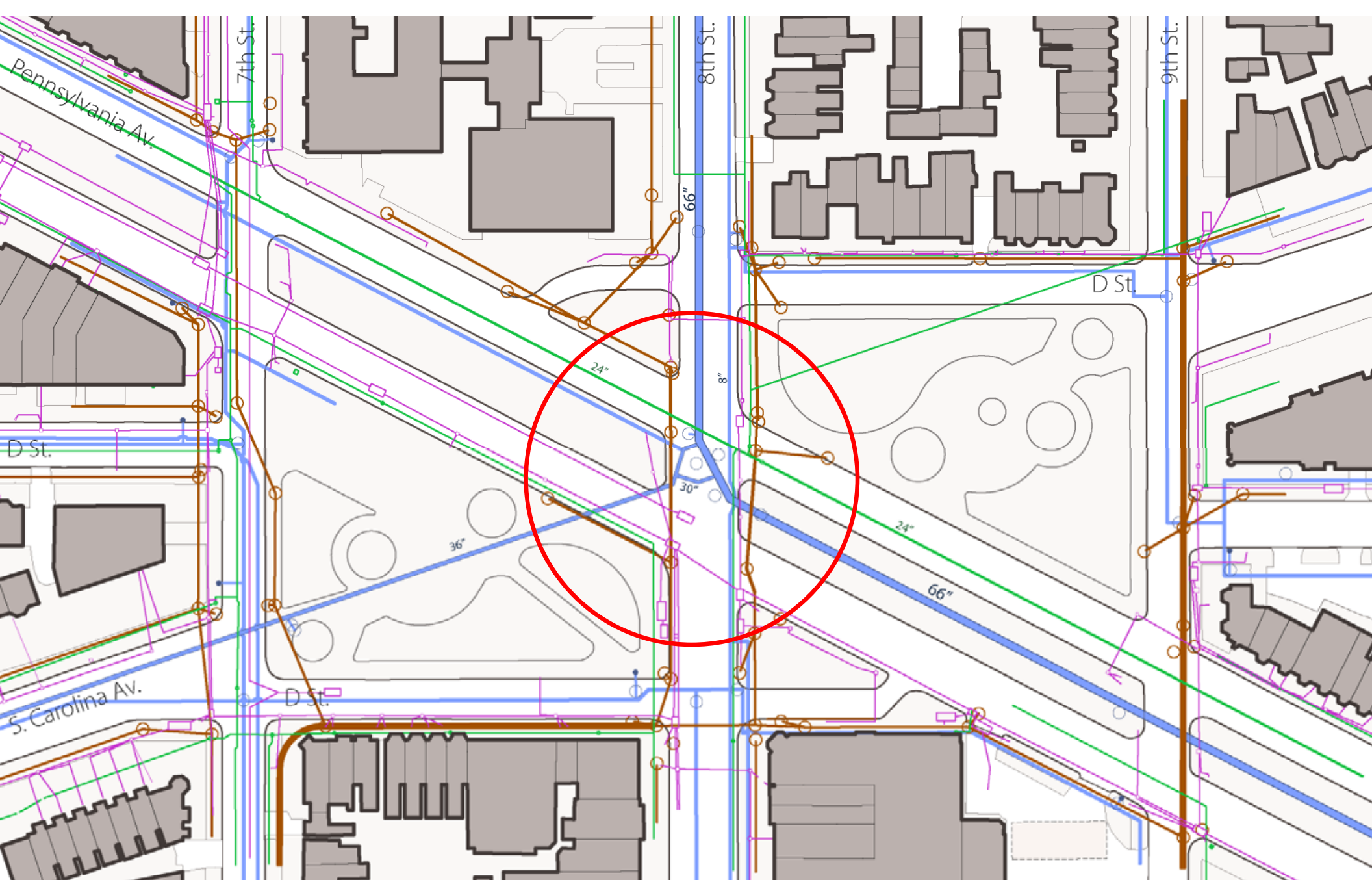




WMATA Facilities: Below Grade





Compiled from: AMT Survey and WMATA Rail Alignment Drawings



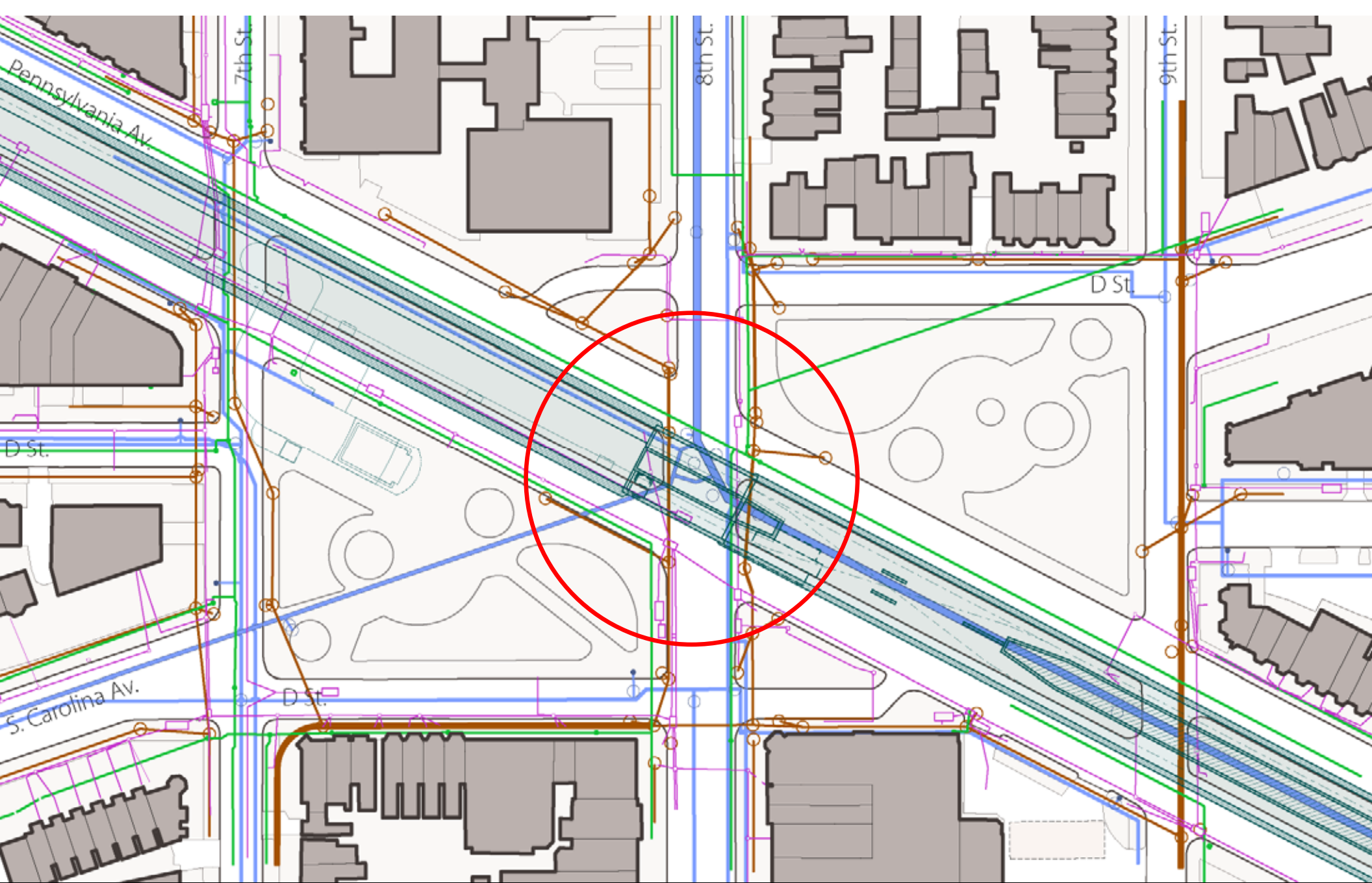


Compiled from: AMT Survey

Underground Utilities








-  Water line
-  Sewer Line
-  Electrical Line
-  Gas Line
-  Water Manhole
-  Sewer Manhole
-  Electrical Vault



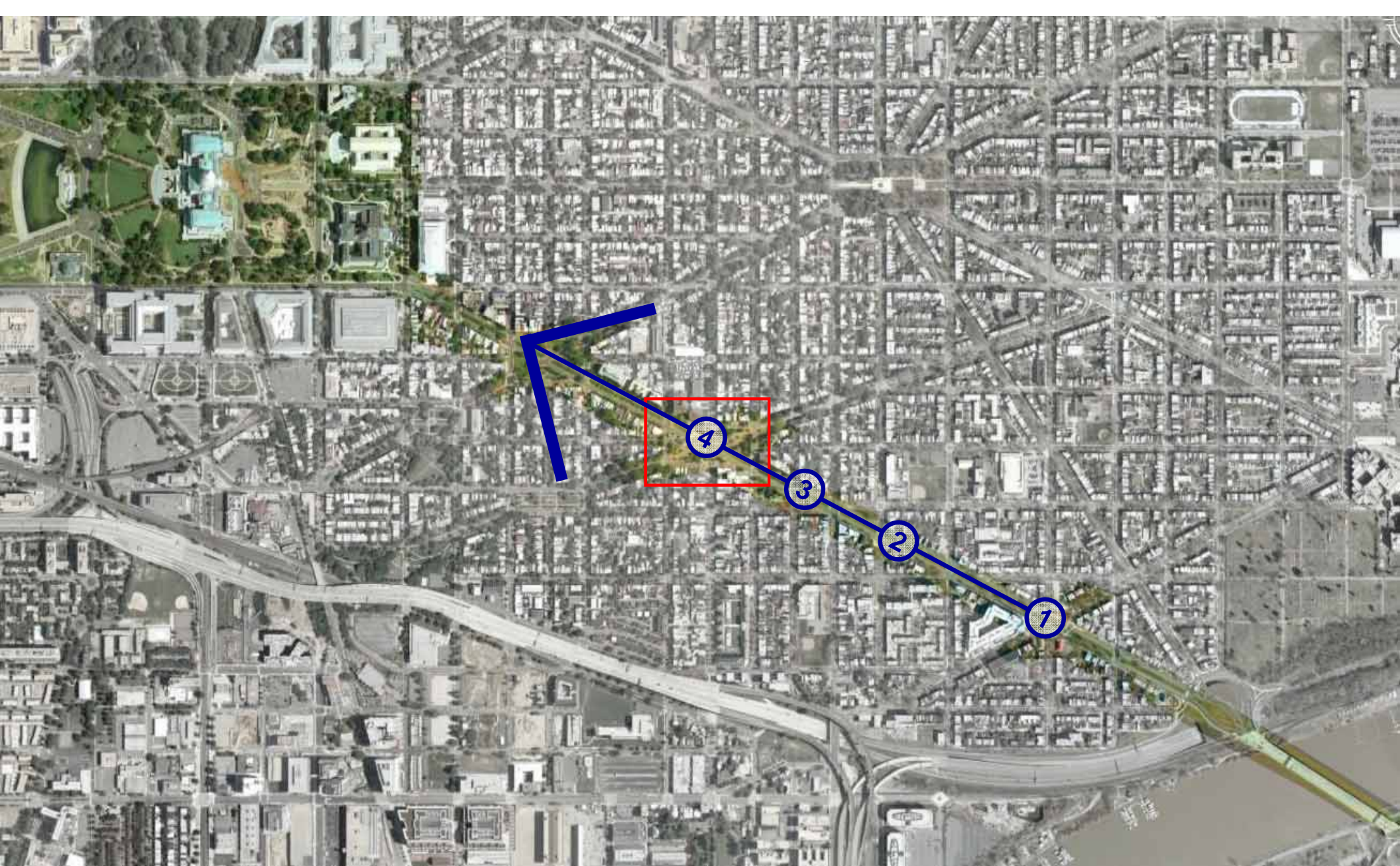


Compiled from: AMT Survey

Underground Metro Facilities & Utilities

- | | | | |
|---|---|--|--|
|  Water line |  Sewer Line |  Electrical Line |  Gas Line |
|  Water Manhole |  Sewer Manhole |  Electrical Vault | |



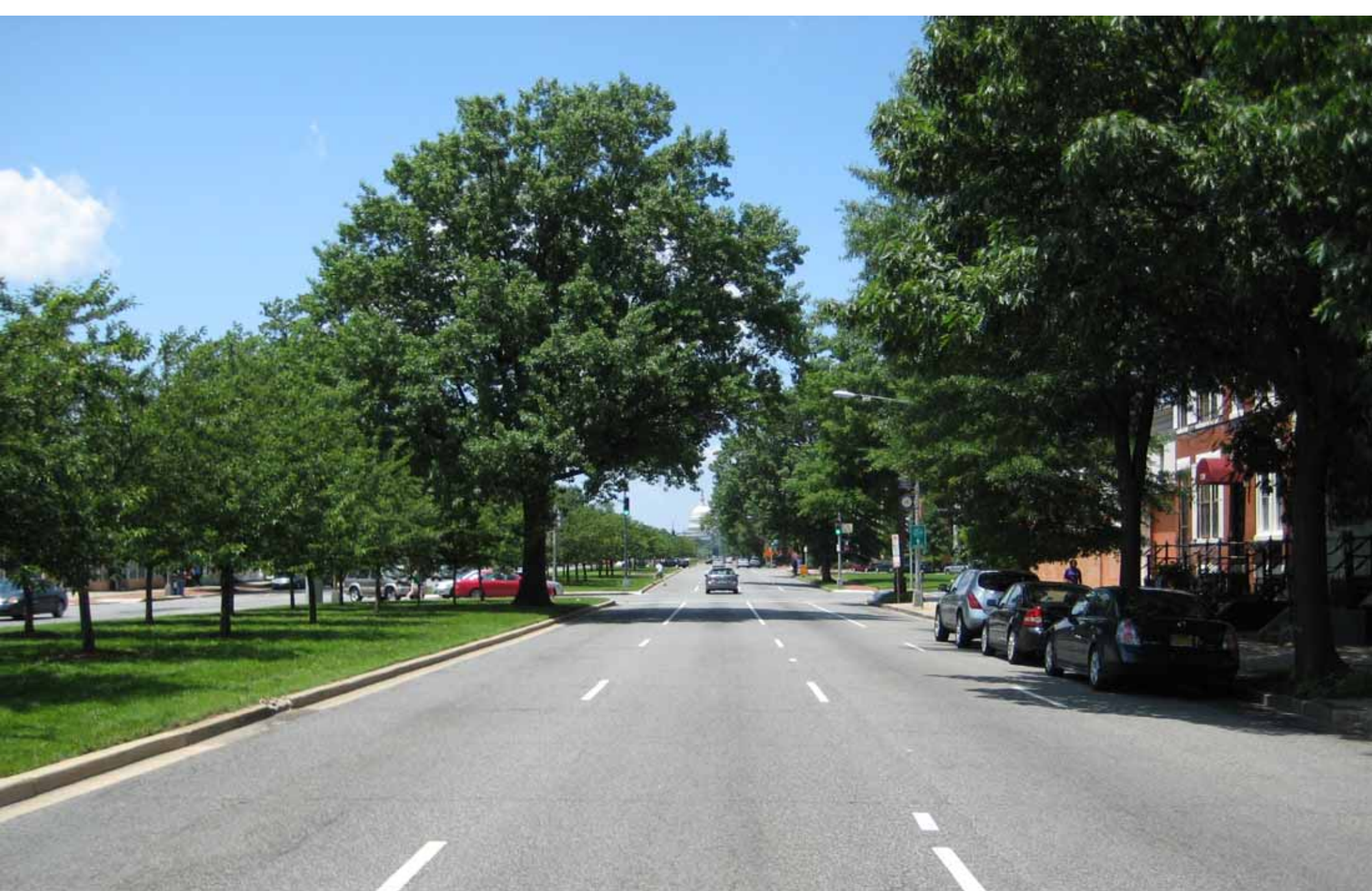


Pennsylvania Avenue view shed



① 1400 block of Penn.

Westbound Pennsylvania Avenue towards Capitol



② 1200 block of Penn.

Westbound Pennsylvania Avenue towards Capitol



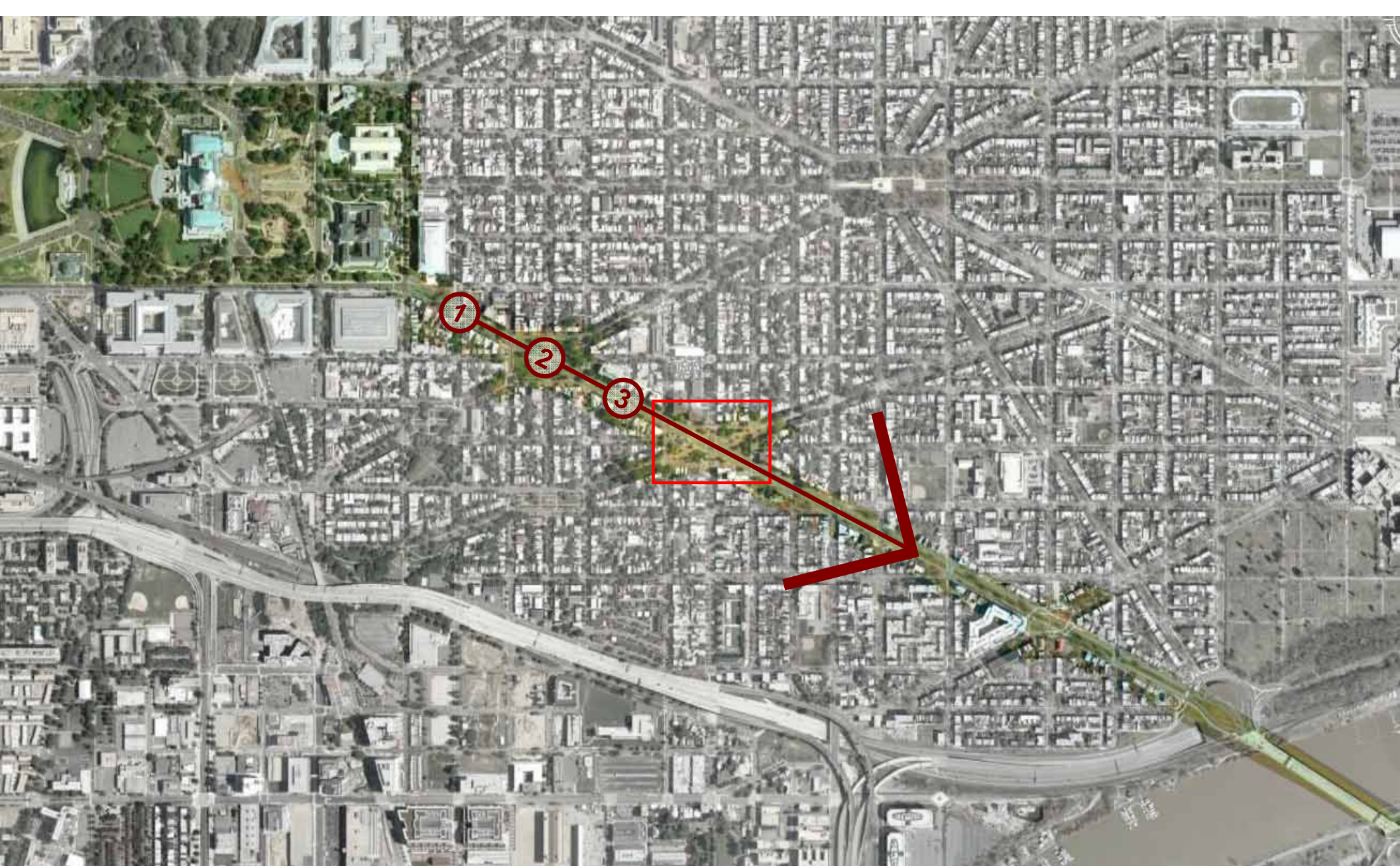
3 1000 block of Penn.

Westbound Pennsylvania Avenue towards Capitol



4 8th & Penn.

Westbound Pennsylvania Avenue towards Capitol



Pennsylvania Avenue View shed



1 3rd & Penn.

Eastbound Pennsylvania Avenue



2 4th & Penn.

Eastbound Pennsylvania Avenue



3

600 block of Penn.

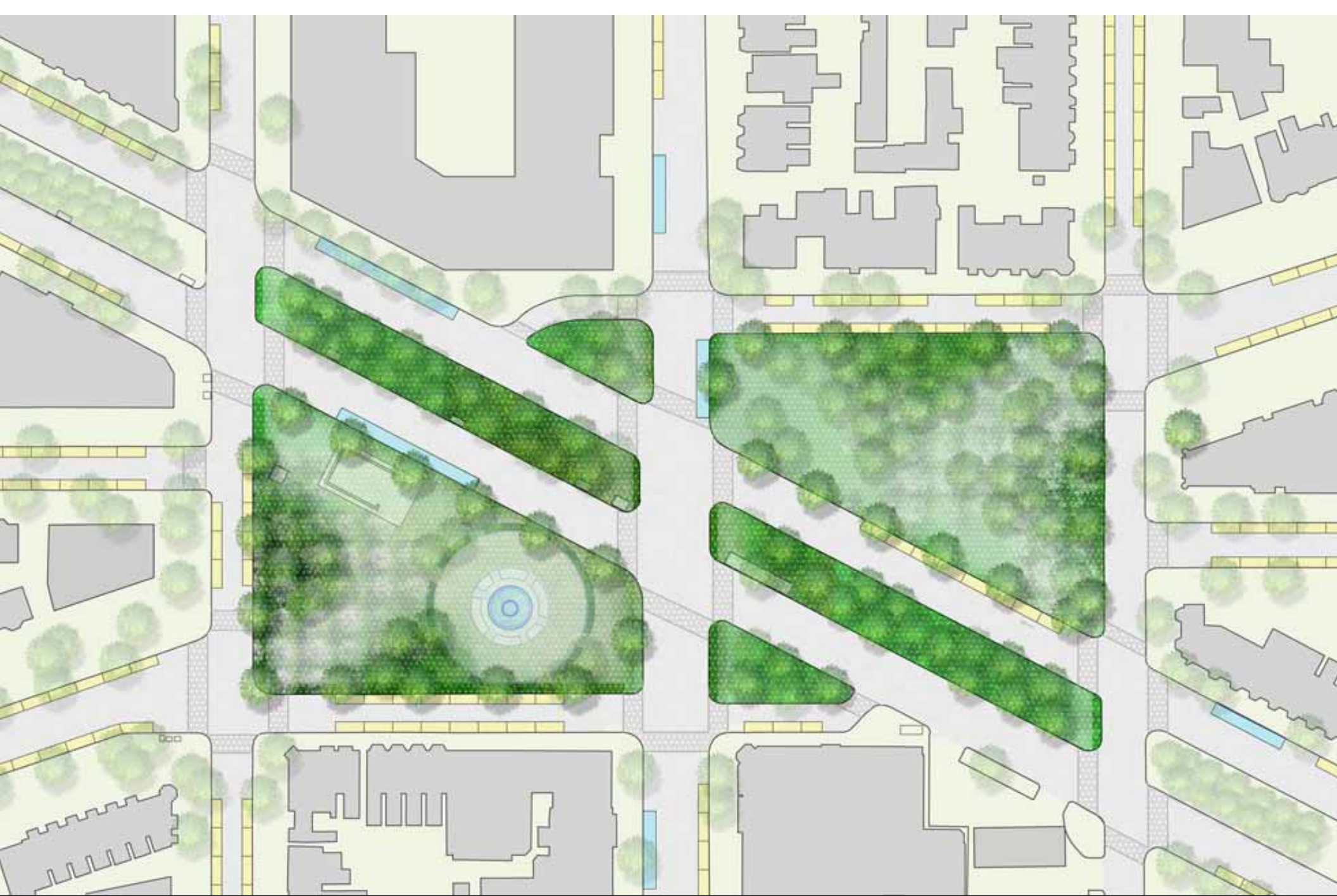
Eastbound Pennsylvania Avenue

Principles of Transportation Design

- Calm traffic speeds
- Improve pedestrian safety and comfort
- Provide for safe travel by bicycle
- Maintain pedestrian access to transit
- Maintain adequate capacity for local and through traffic
- Anticipate other potential transportation changes in corridor
- Minimize loss of on-street parking
- Minimize impacts on local neighborhood streets

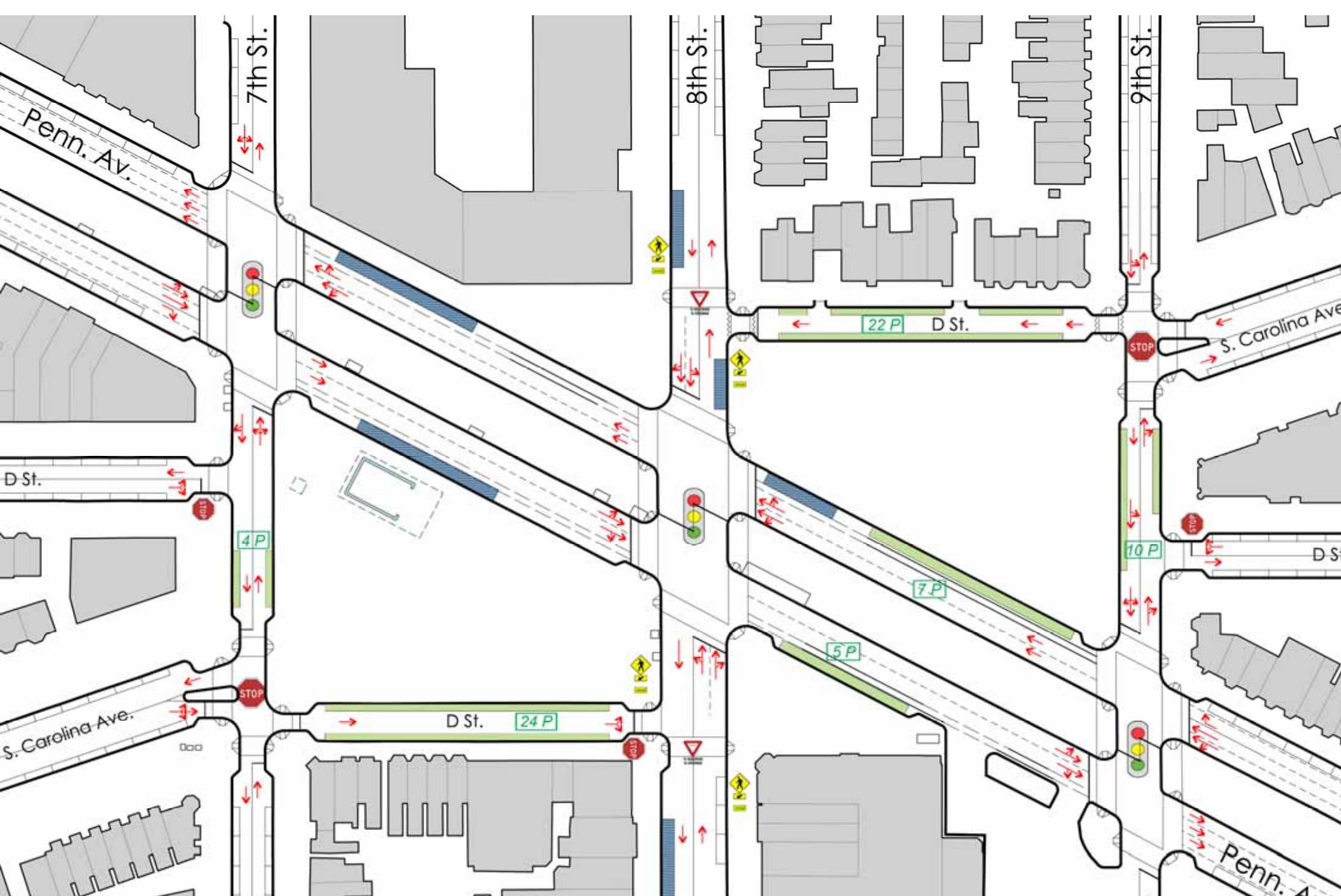
Alternative A :

Existing
(Improved)



Existing





Existing (Improved)

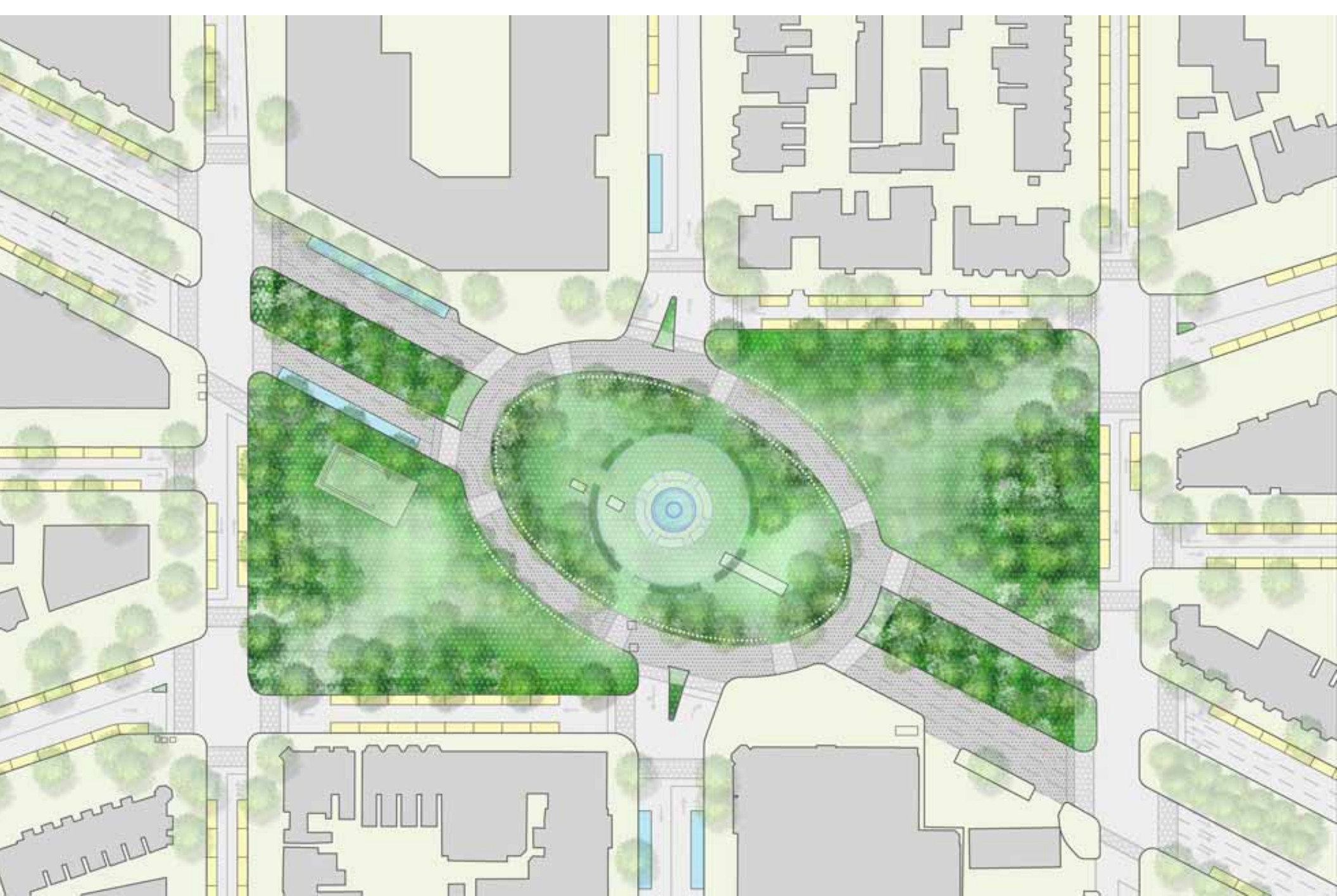




Curb Extensions

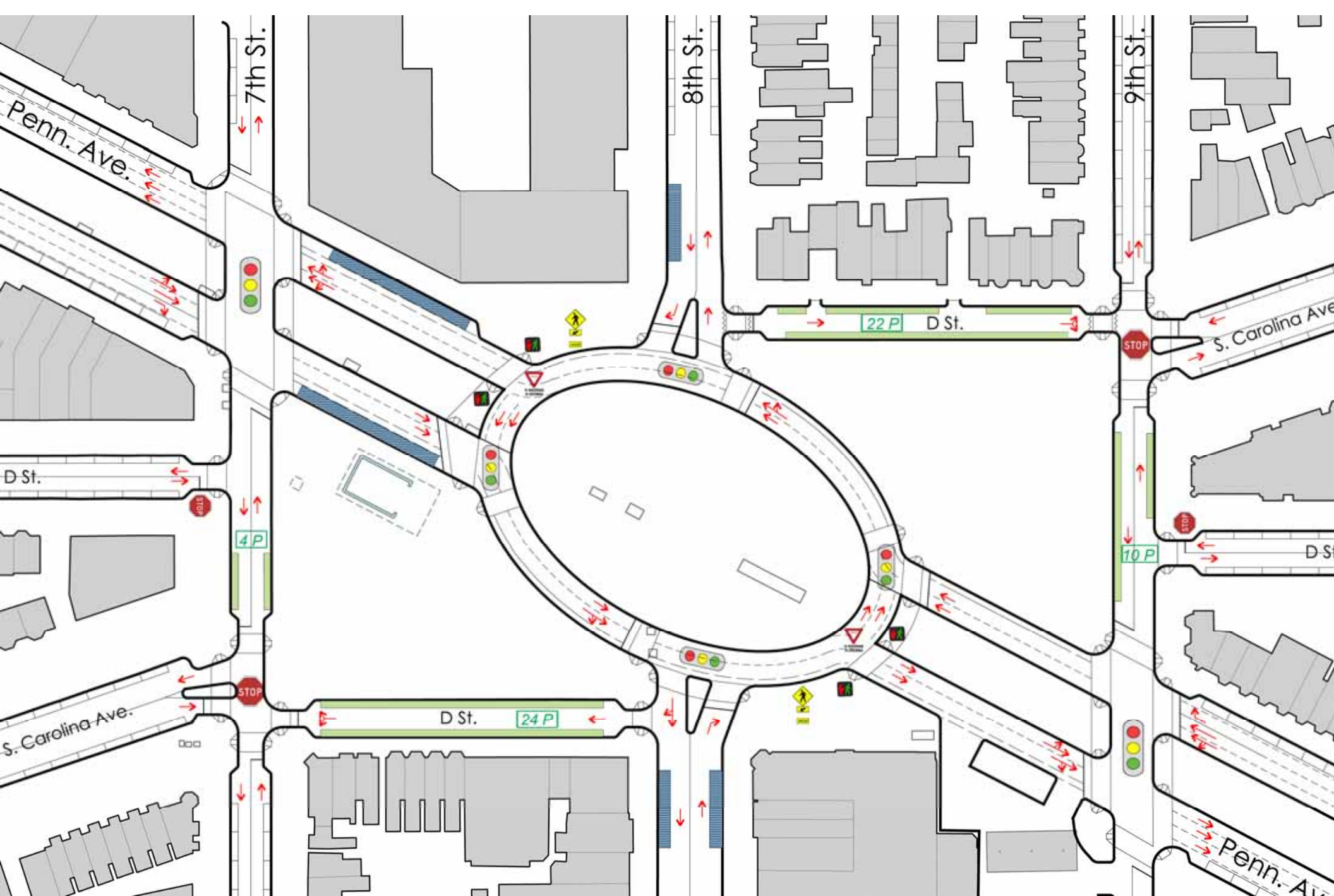
Alternative B :

Triptych



Triptych





Triptych



Alternative C :

Central Park



Central Park





Central Park



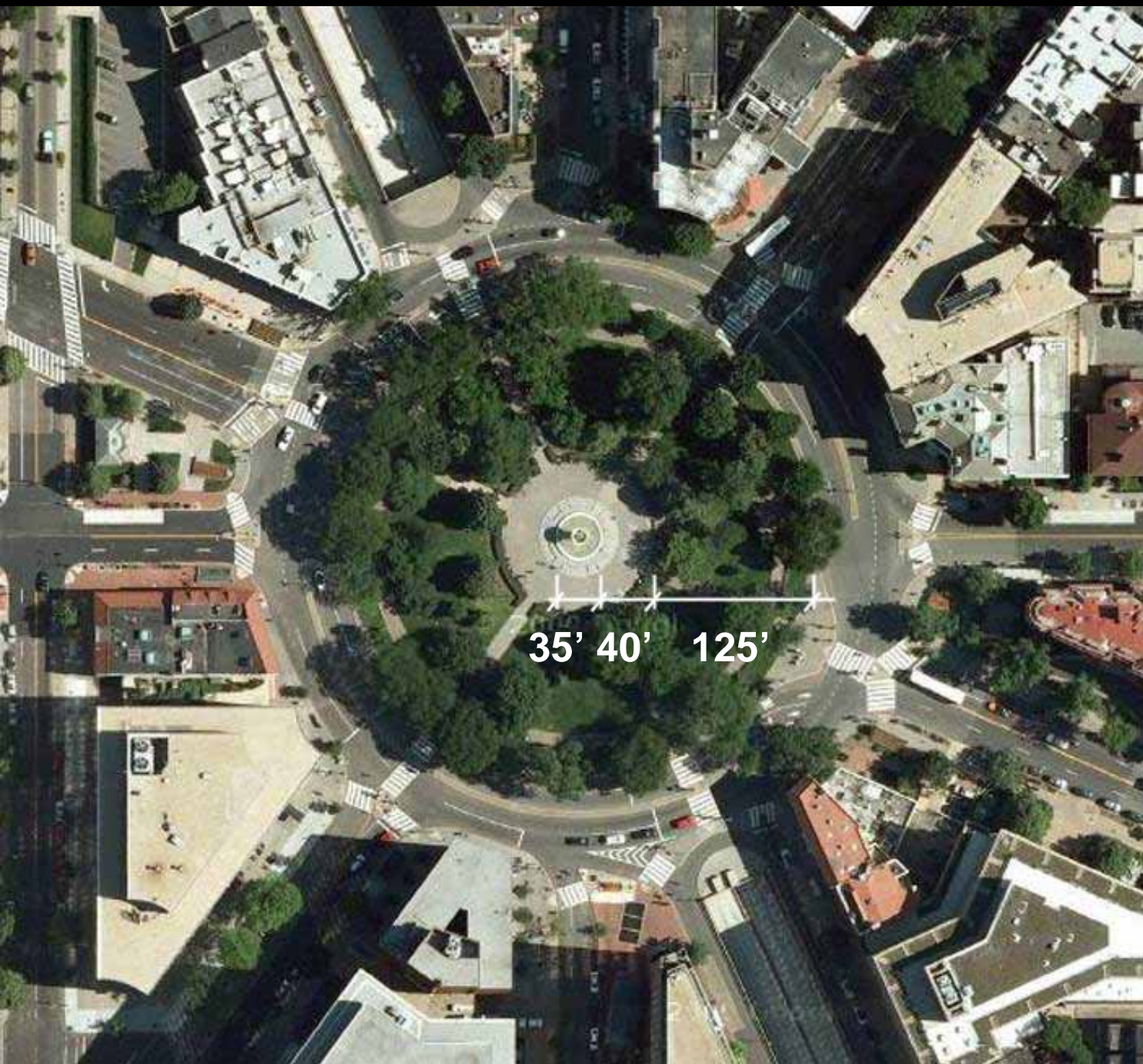


Elements of Gathering Spaces

- Buffering / Layering
- People Attractors
(Water Features, Sculptures, Children's Play Elements, Sculptural Landforms)
- Spatial Definition
- Flexible Space
- Seating / Site Furnishings
(inhabit exterior and interior of space)
- Planting

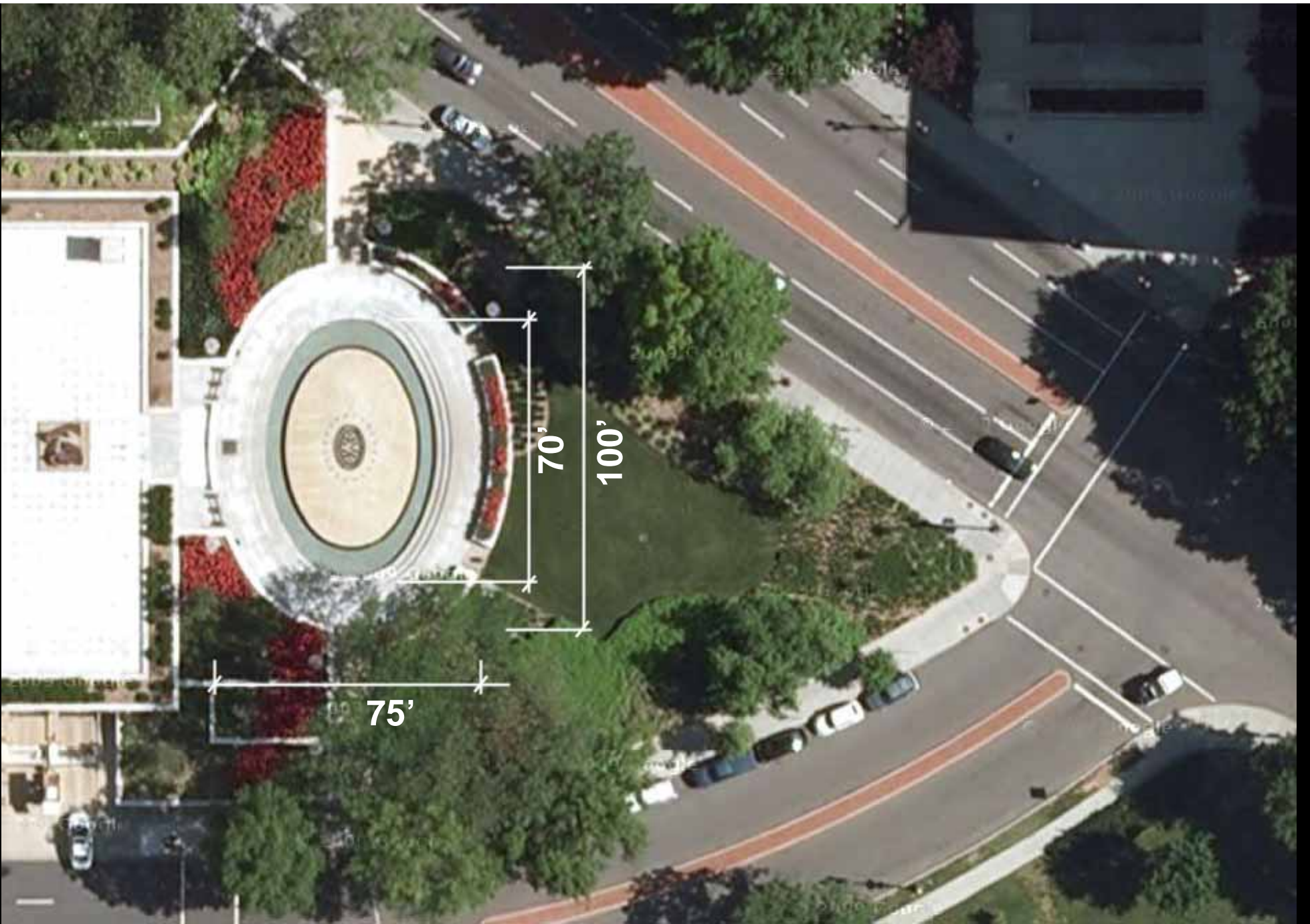


Buffering / Layering

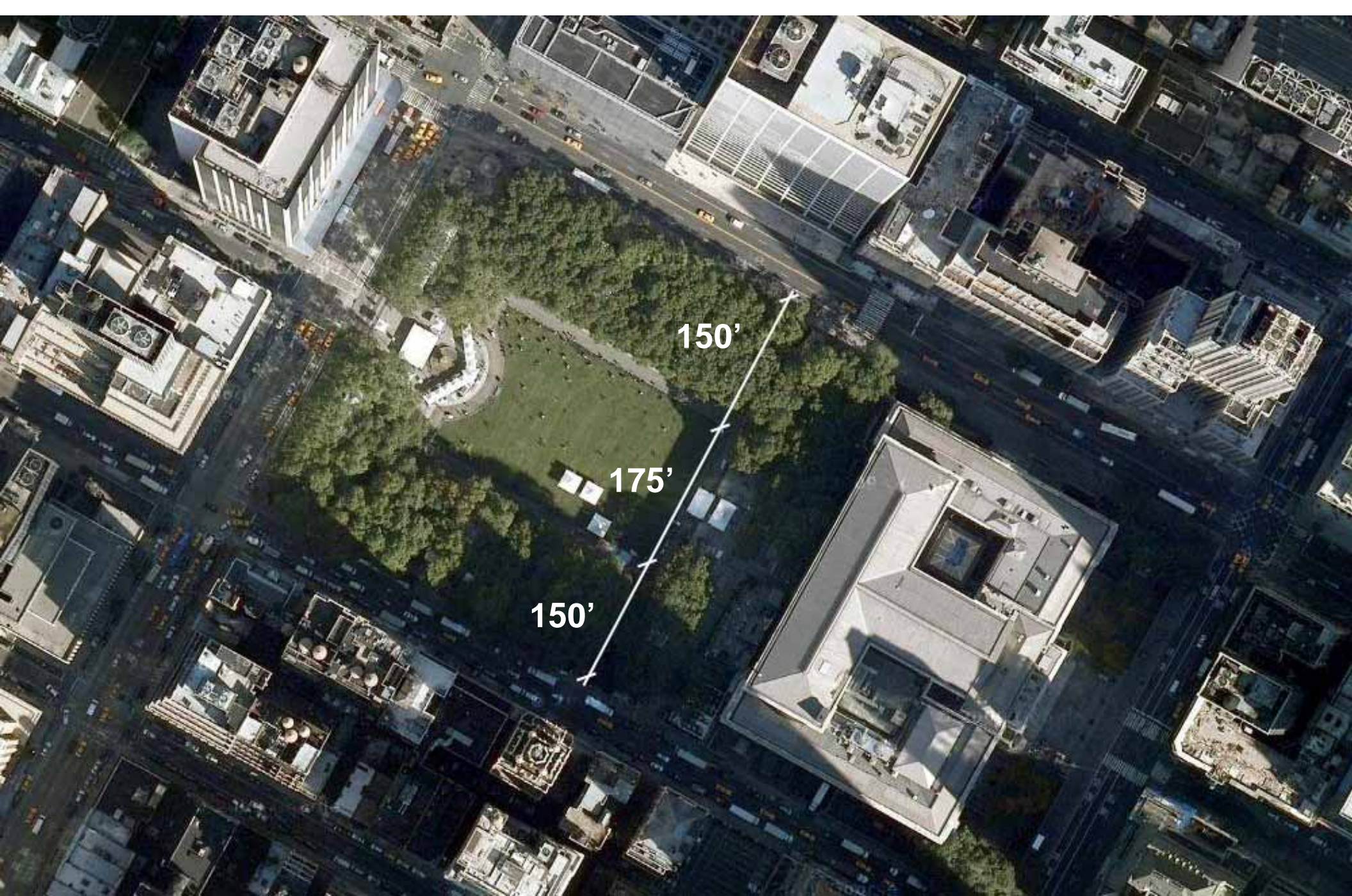


- 1 SIDEWALK
- 2 BOLLARD/CHAIN
- 3 LAWN
- 4 HEDGE
- 5 BENCH
- 6 SIDEWALK
- LAWN
- 8 TREE CIRCLE
- 9 FLOWER BED
- 10 HEDGE
- 11 BENCH
- PAVING
- 13 STEPS
- 14 POOL
- 15 FOUNTAIN

Dupont Circle Washington, DC



Federal Reserve
Washington, DC



Bryant Park
New York City, New York



Water / Fountains



**Columbus Circle
New York City, New York**



**Columbus Circle
New York City, New York**

Fountain at Exterior of Plaza



**Washington Square Park
New York City, New York**



**Washington Square Park
New York City, New York**

Fountain as Flexible Space



**Federal Reserve
Washington, DC**



**Federal Reserve
Washington, DC**

Fountain at Center of Plaza



Dupont Circle
Washington, DC

Fountain at Center of Plaza



National Portrait Gallery
Washington, DC



Place des Terreaux
Lyon, France



National Portrait Gallery
Washington, DC

Fountain Jets / Water Scrims in Paving



Arcade / Sculpture



**National Arboretum
Washington, DC**



Arcade as Spatial Definition



**Battery Park
New York City, New York**



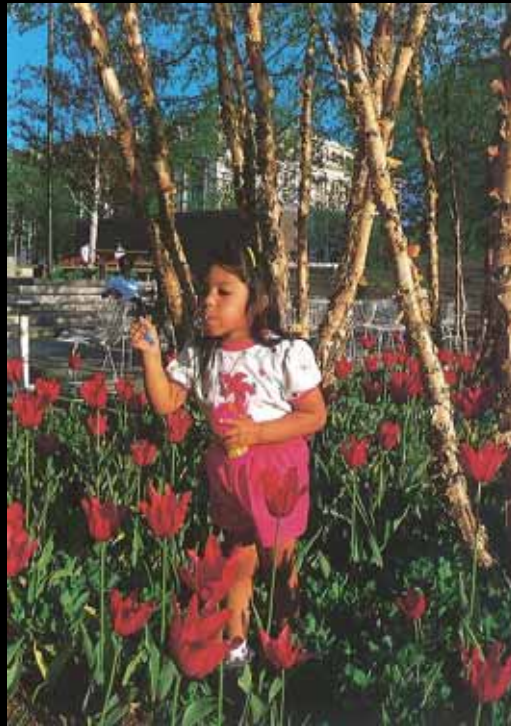
Martin Puryear Sculpture



Children's Play Elements



Teardrop Park
New York City, New York



Pershing Park
Washington, DC



Teardrop Park
New York City, New York

Discovery Trails



Rockefeller Park
New York City, New York

Tom Otterness Sculpture



Paris Plage
Paris, France



Tanner Fountain at Harvard University
Cambridge, Massachusetts



Special Lighting



Sculptural Landforms



Sculptural Landforms



Site Furnishings



**Chicago Botanic Garden
Glencoe, Illinois**



**Rittenhouse Square
Philadelphia, Pennsylvania**

Built-in Benches



**Rittenhouse Square
Philadelphia, Pennsylvania**



Fountain as Site Furniture



**Palais Royal
Paris, France**



**Bryant Park
New York City, New York**



Flexible Seating



Materials



Saitama Sky Forest Plaza
Tokyo, Japan



Bismarckplatz
Heidelberg, Germany



Cloud Gardens
Toronto, Ontario, Canada

Patterned Paving



**Macarthur Center
Norfolk, Virginia**



**Georgetown Residence
Washington, DC**

Paving Materials Consistent with Neighborhood Fabric



**Jardins des Tuileries
Paris, France**



Gravel Panel



Planting



Landscapes to Celebrate Seasonality: Spring



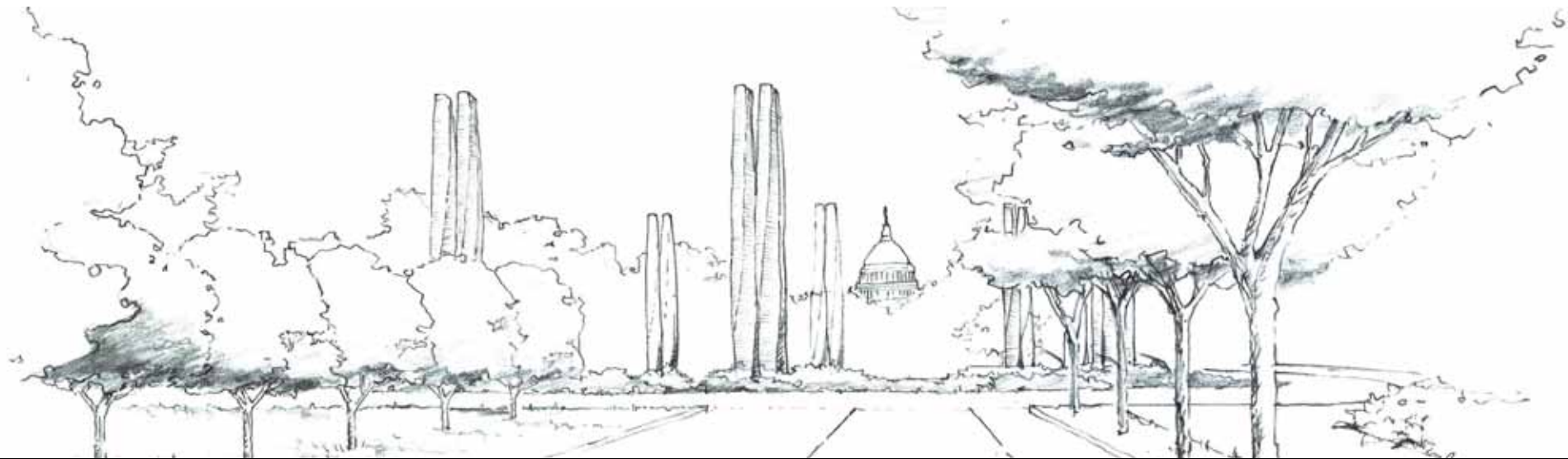
Landscapes to Celebrate Seasonality: Summer



Landscapes to Celebrate Seasonality: Fall



Landscapes to Celebrate Seasonality: Winter

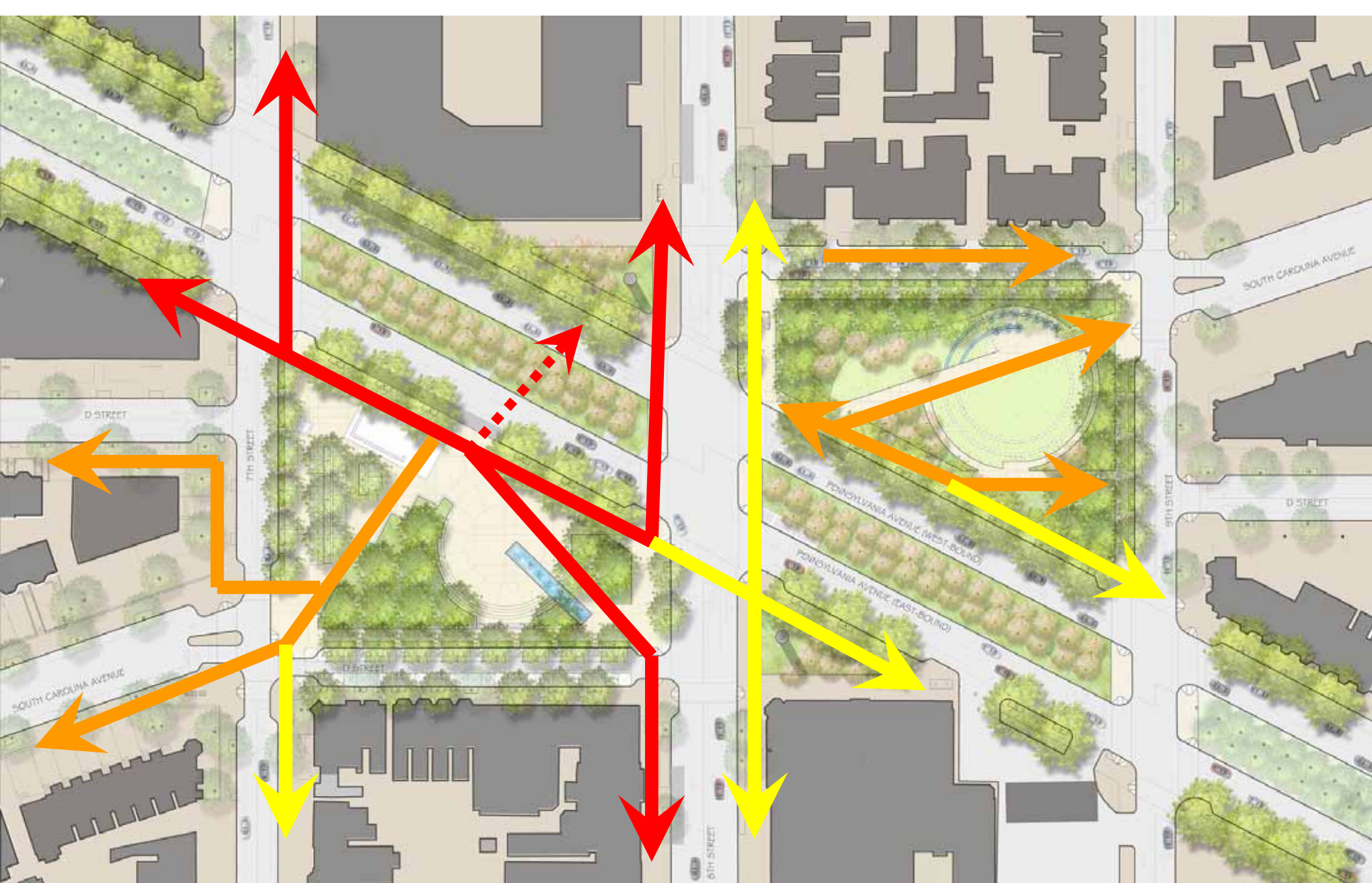


Proposed Landscape Plans






Alternative A
Existing (Improved)

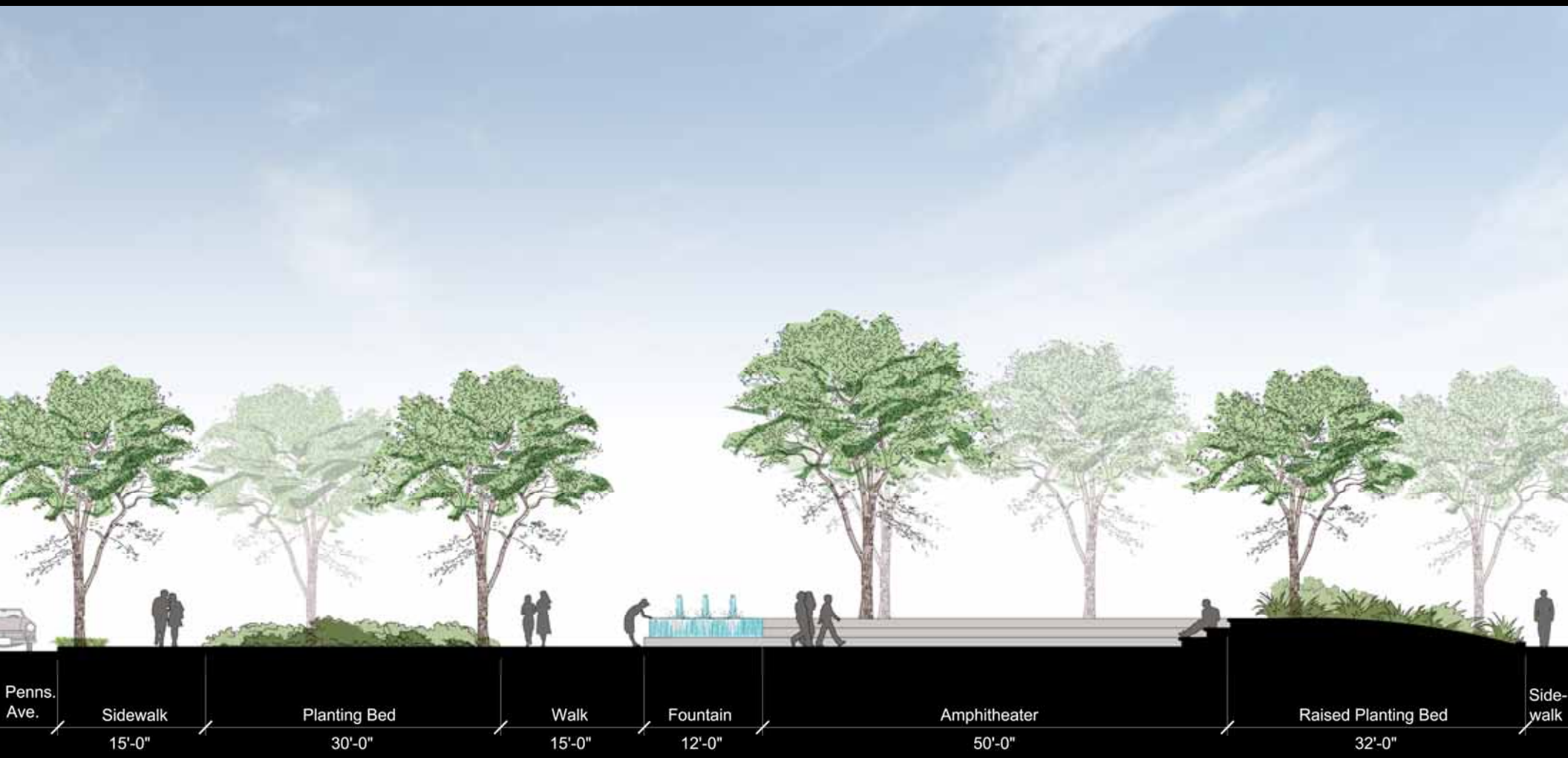




Alternative A
Existing (Improved)

-  Primary Pedestrian Traffic
-  Secondary Pedestrian Traffic
-  Tertiary Pedestrian Traffic





Section through amphitheatre

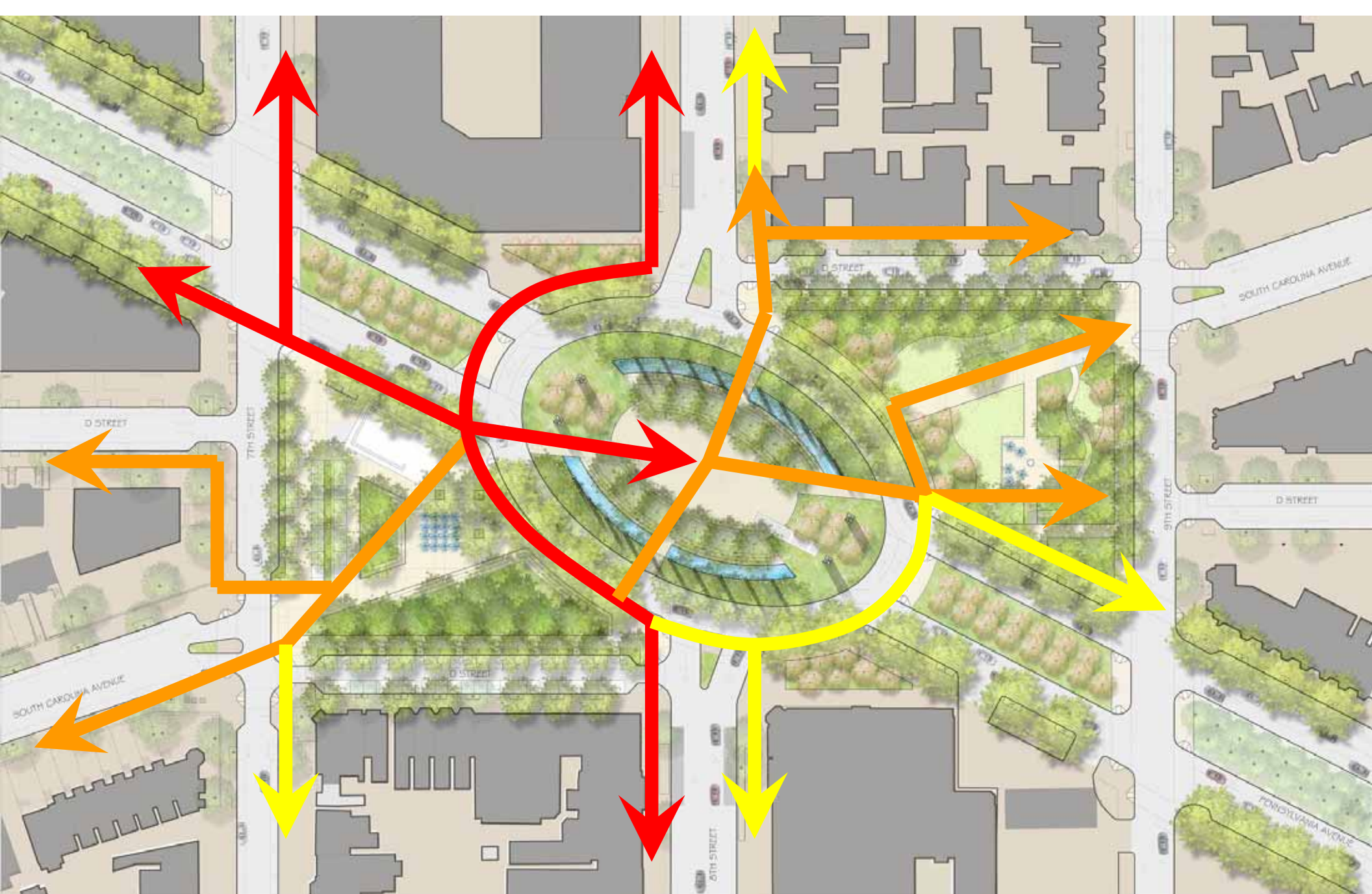


View from Metro entrance looking East






Alternative B Triptych





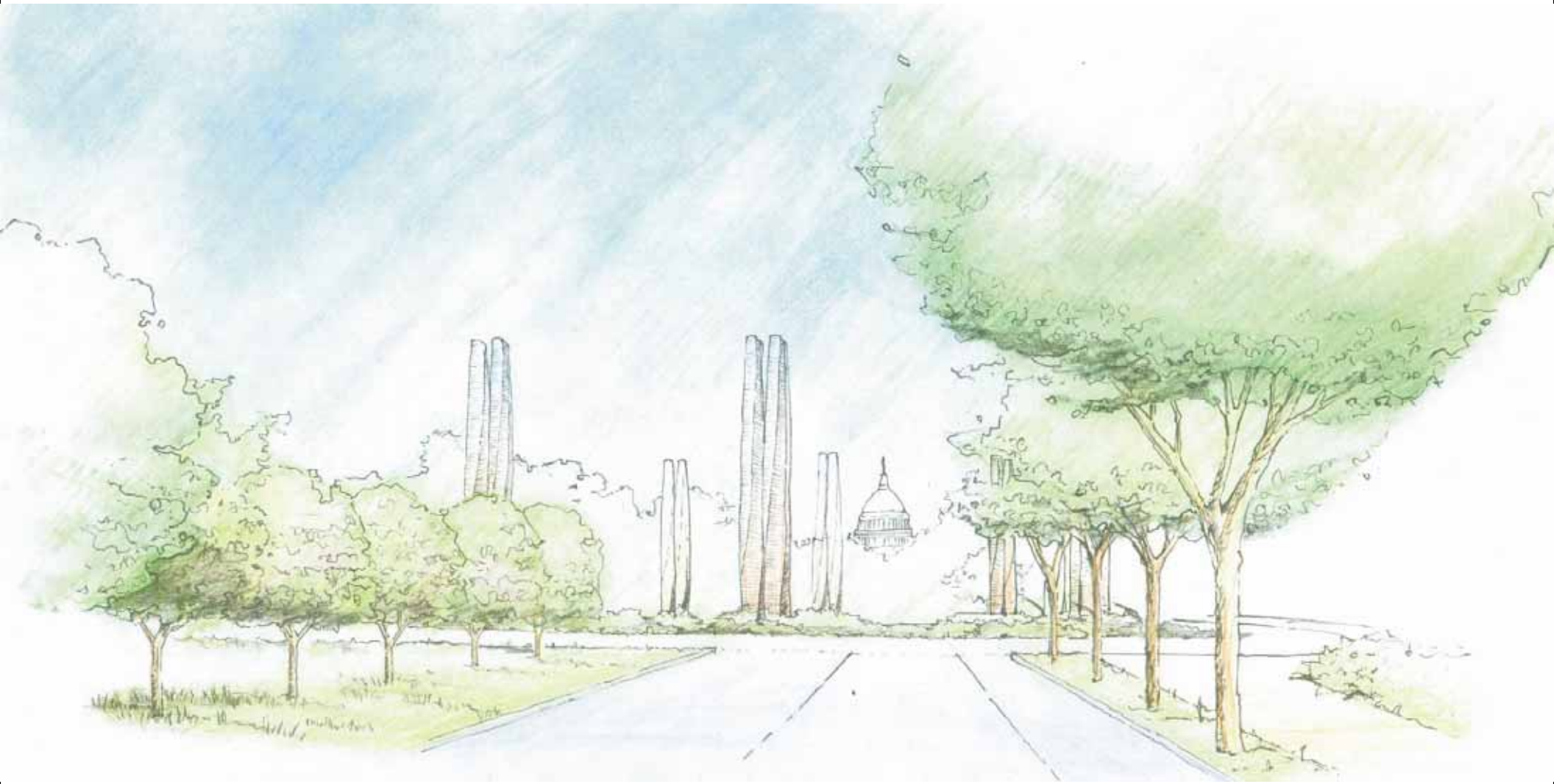
Alternative B Triptych

-  Primary Pedestrian Traffic
-  Secondary Pedestrian Traffic
-  Tertiary Pedestrian Traffic

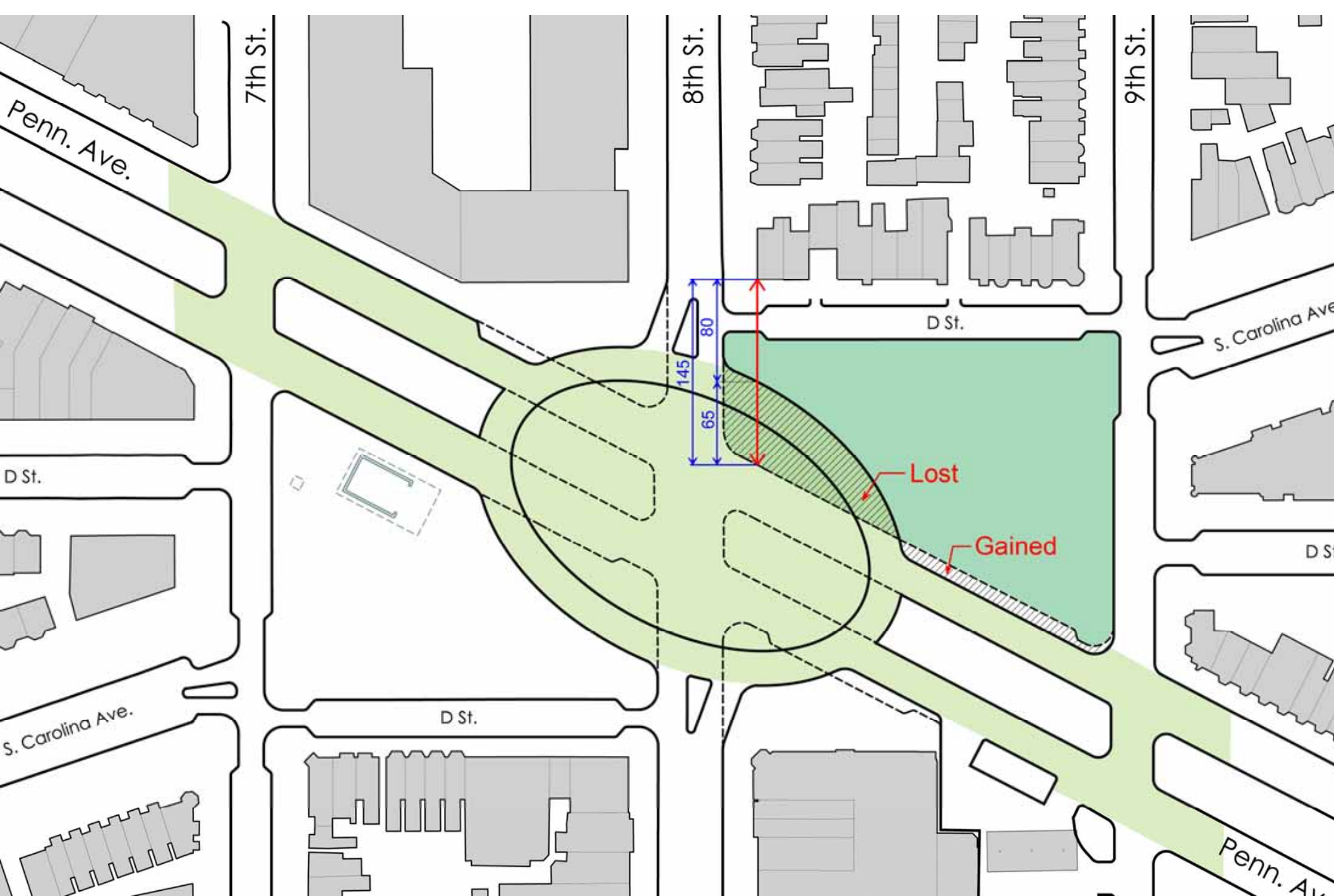




Section through central gathering space



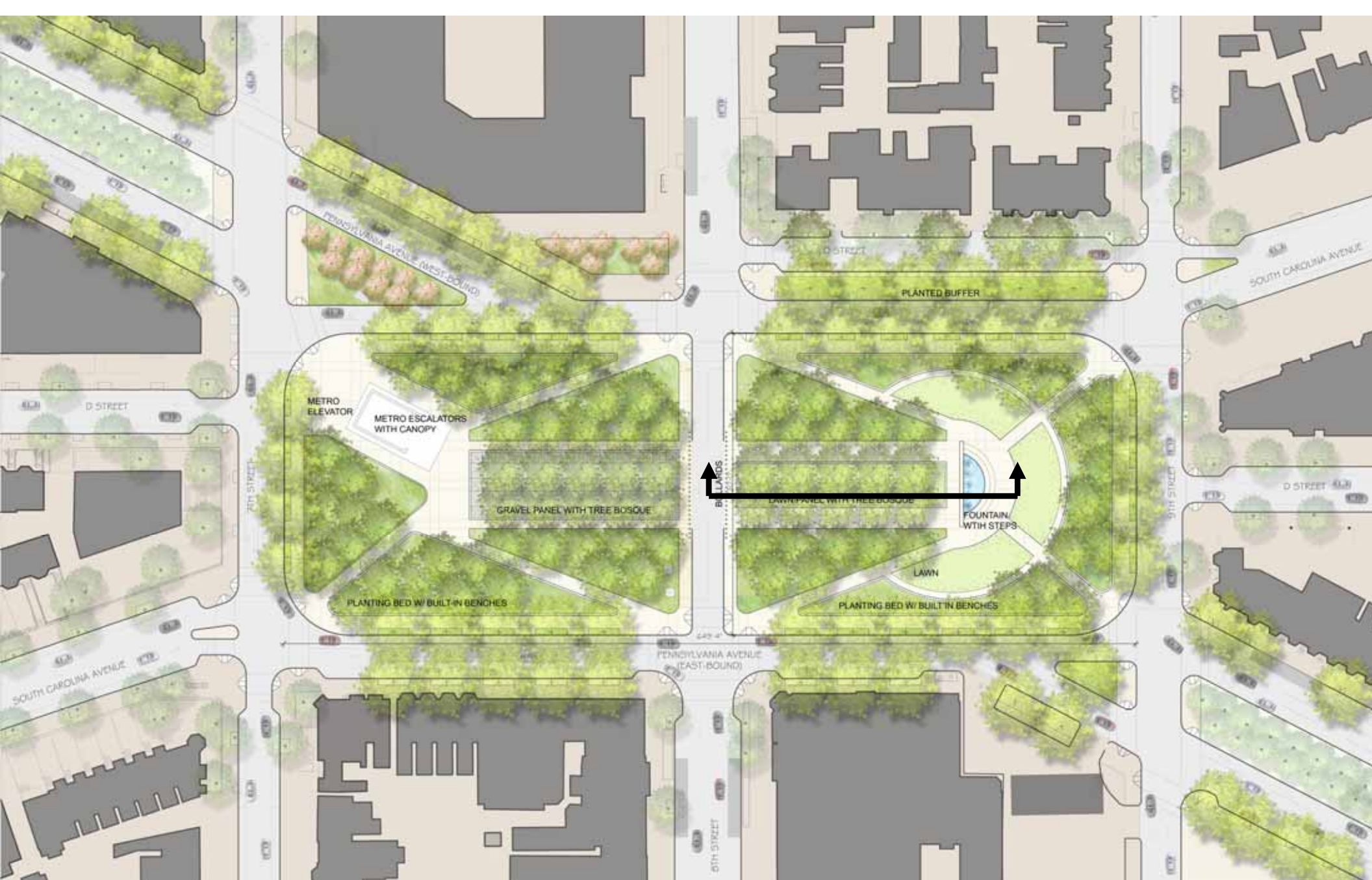
Pennsylvania Ave. view looking West



Triptych (park area comparison for D street residents)

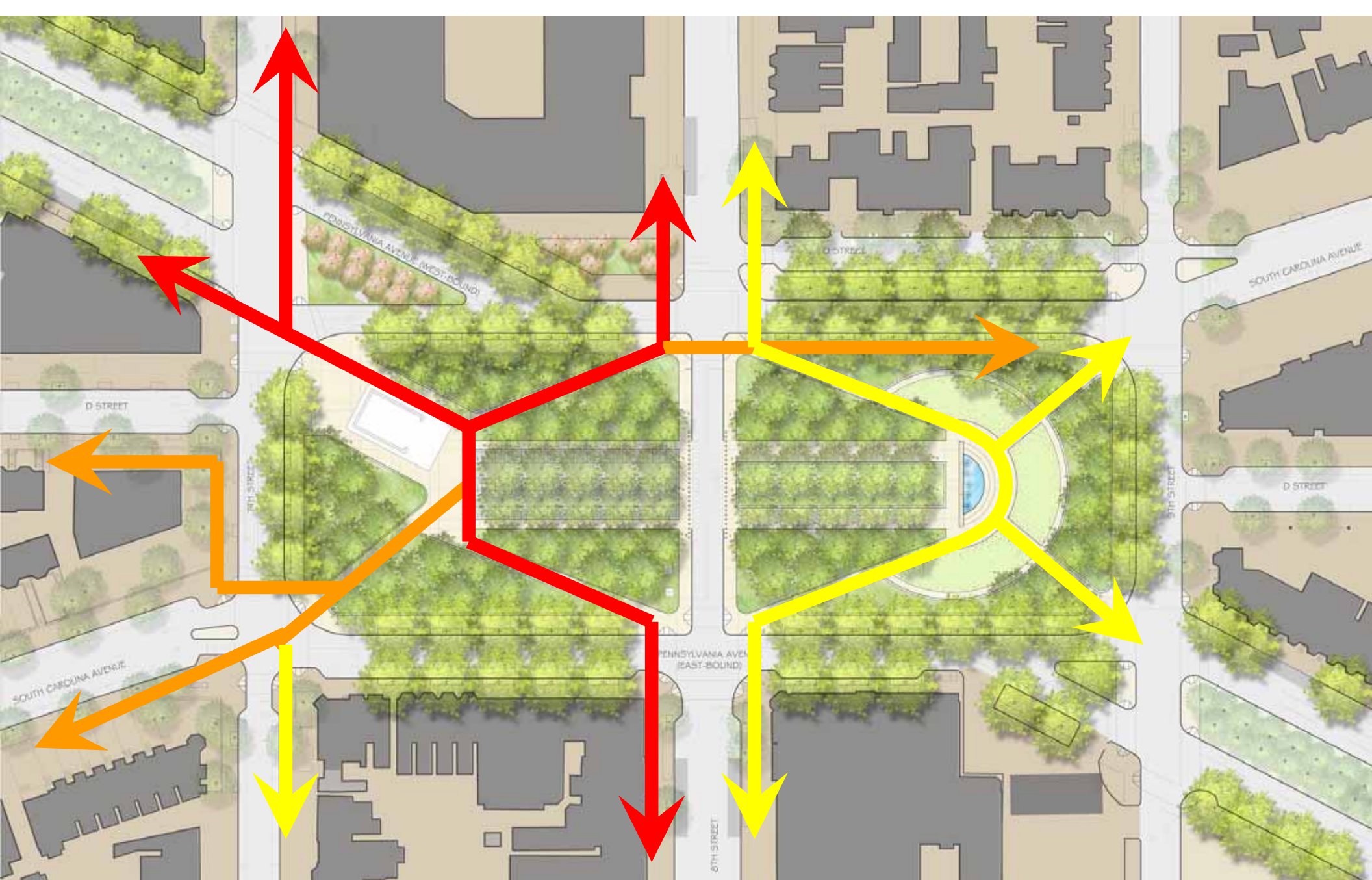
Park area lost = 0.117 acres (5096 sq.ft.)
 New Park area = 1.043 acres
 Existing Park area = 1.16 acres








Alternative C Central Park

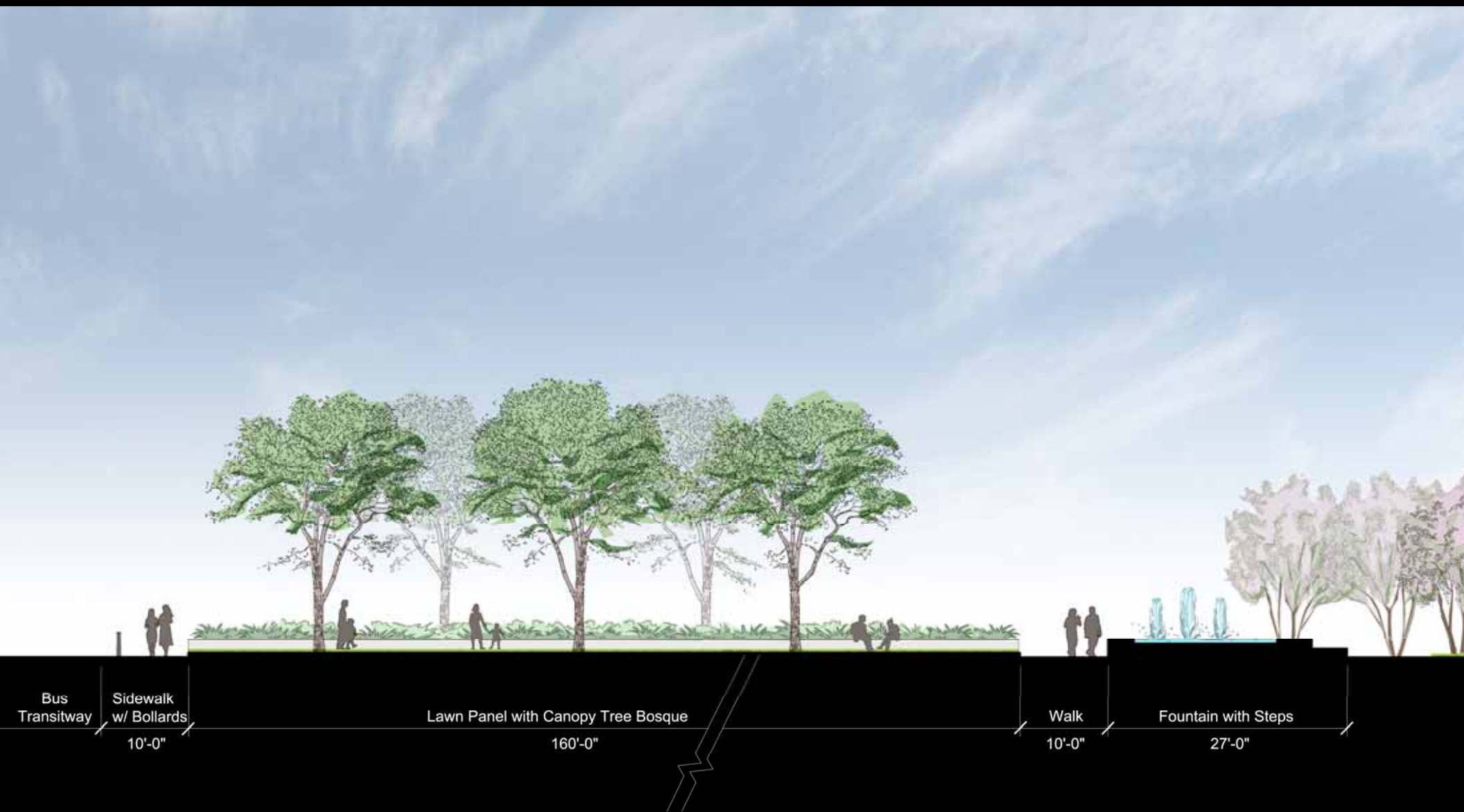




Alternative C Central Park

-  Primary Pedestrian Traffic
-  Secondary Pedestrian Traffic
-  Tertiary Pedestrian Traffic

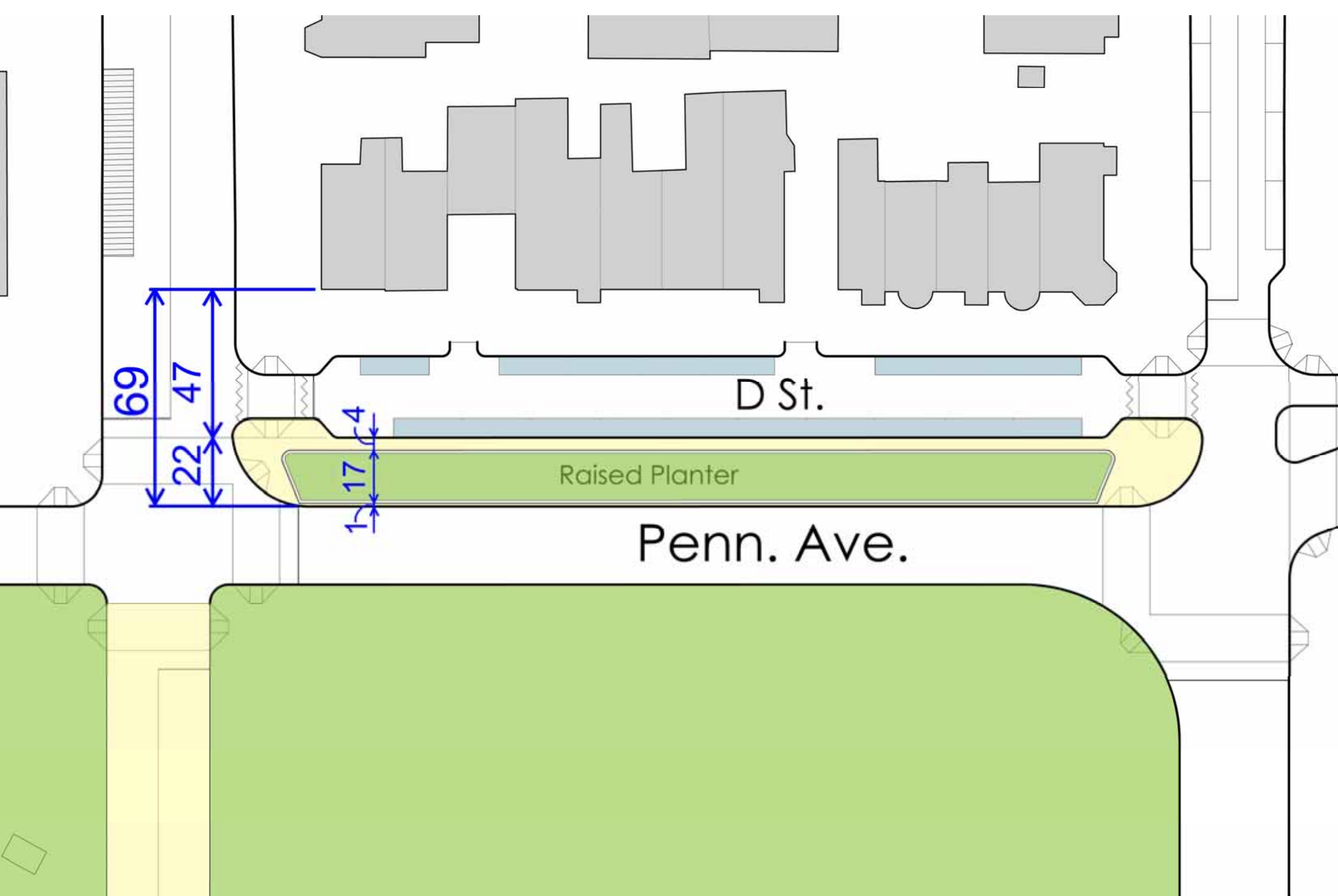




Section through Tree Bosque

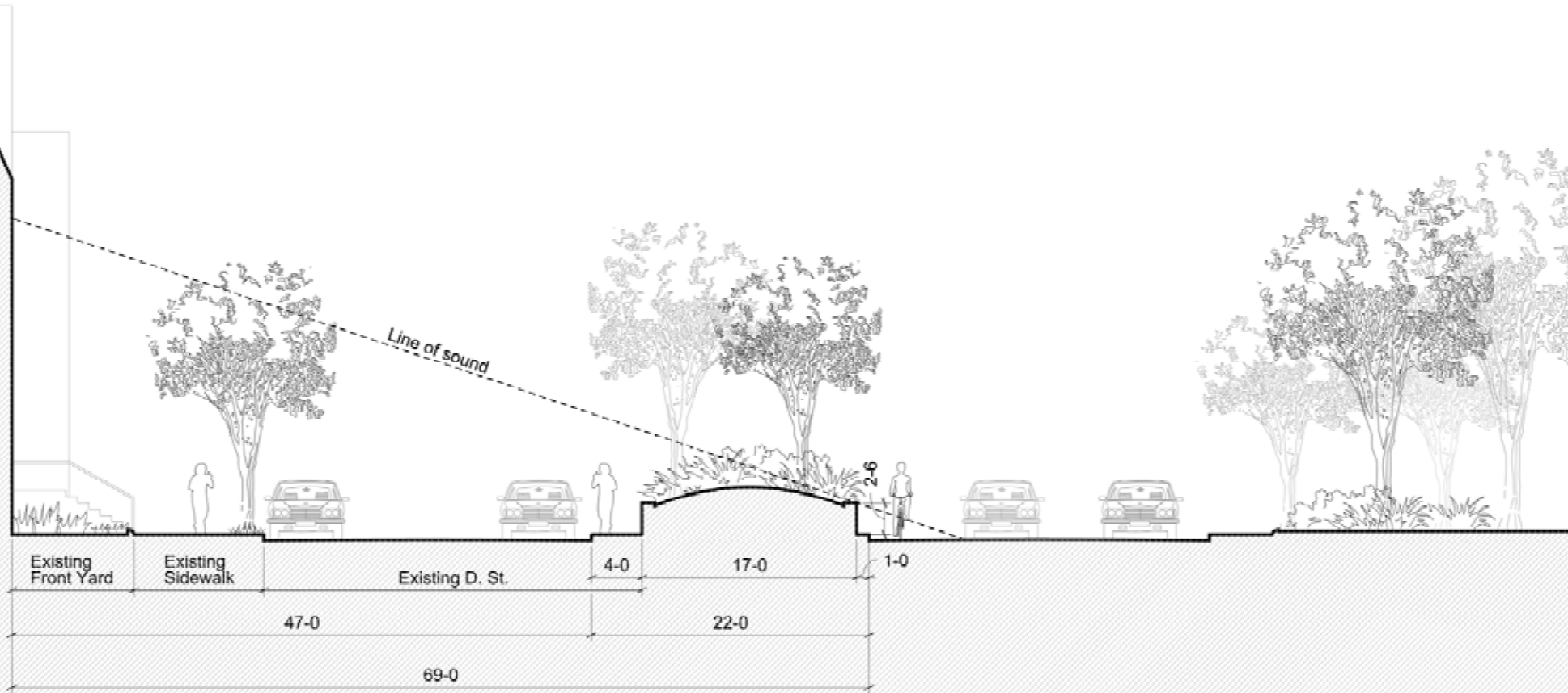


View from Western plaza looking East



D Street Landscape Buffer





D Street Landscape Buffer

Section thru D St. looking East



Public Comment Period

July 1 to August 15

- www.capitolhilltownsquare.org
- contact Task Force members

Members of the Task Force

Sharon Ambrose	At Large
Don Denton	Barracks Row Main Street
Ken Golding	Market Row Street Merchants Association
Ray Gooch	Grace Church Residents
John Gordon	Barracks Row Main Street
Ken Jarboe	Advisory Neighborhood Commission/Capitol Hill SE (ANC 6B)
Margaret Missiaen	600 Block South Carolina Ave. Residents
Julie Olson	Advisory Neighborhood Commission/Capitol Hill SE (ANC 6B)
David Perry	Barracks Row Main Street
Susan Perry	Capitol Hill Business Improvement District (BID)
Donna Scheeder	Eastern Market Community Advisory Committee
Harry Schnipper	Capitol Hill Association of Merchants and Professionals
Kate Sylvester	400 Block 7 th Street SE Residents
Tip Tipton	Barracks Row Main Street
Dick Wolf	Capitol Hill Restoration Society
Norma Wright	Eastern Market Metro Community Association (EMMCA)